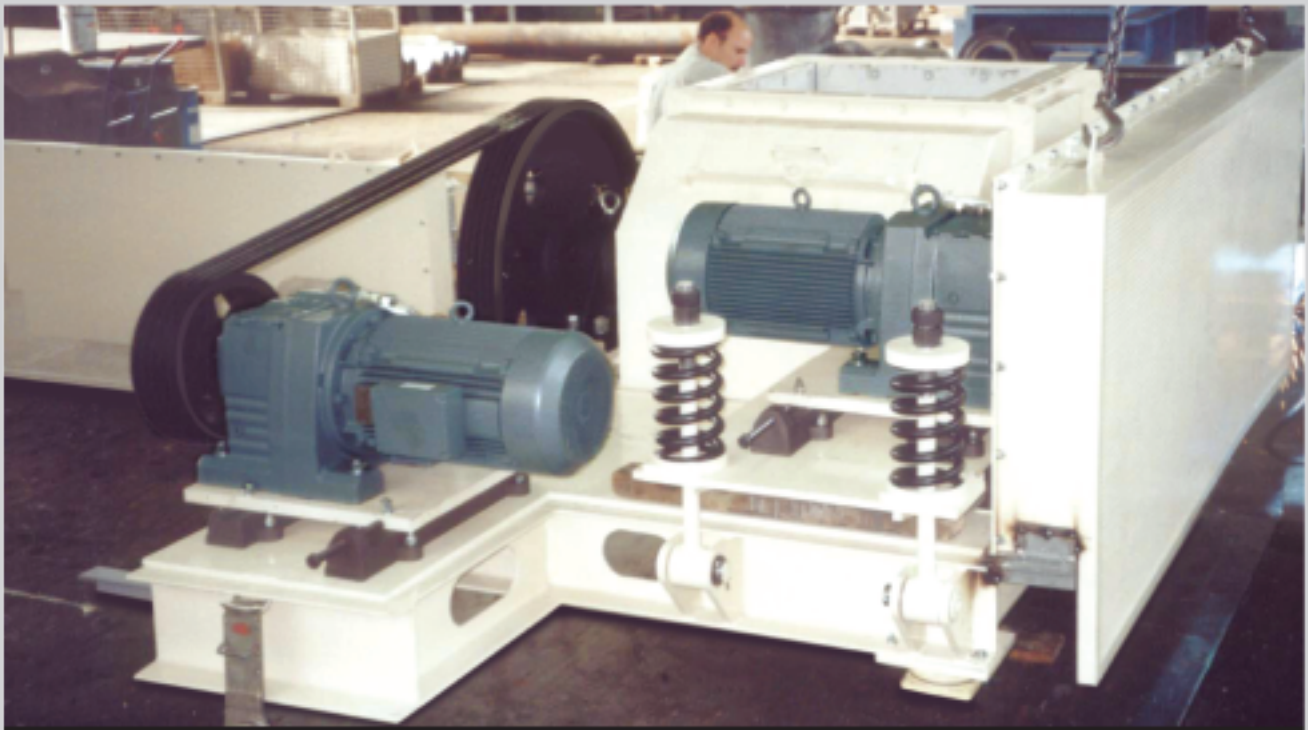


An ISO 9001:2000 Company

McNally Sayaji Engineering Limited

A Subsidiary of McNally Bharat Engineering Company Limited



Double Roll Crusher | For Primary and Secondary Crushing

At MBE we believe in constantly reinventing ourselves. And in line with this we are always on the lookout for new avenues and opportunities.

McNally Sayaji Engineering Limited (MSEL), with factories in Kumardhubi, Asansol, Bangalore and Baroda, is one of the country's leading manufacturer of Crushing, Screening, Milling, Material Handling and other heavy equipment, serving the core sectors of the economy. These sectors include Coal, Mining and Mineral Processing, Power, Steel, Ports, Cement, Aluminium and Non-Ferrous Metals.

The manufacturing units have ISO 9000 certification. We have marketing and branch offices at Kolkata, Baroda, Mumbai, Kumardhubi, Bangalore, Chennai,

Secunderabad, Cochin, Nagpur, Vizag and Vijaywada. This makes us capable of comprehensive customer support at all times.

MSEL has inducted technology over the years through strategic alliances and developed focused R&D and Design & Development teams, who offer optimum and cost effective solutions to meet customer needs.



The fields of Application

Double roll crushers are used for both, primary and secondary crushing. They guarantee strictly defined final grain size with a minimum usage of grains.

The Feed Materials

Raw materials, secondary materials and by-products such as lignite, coke, sinter, coal, soft to medium-hard rock, ore, chalk, iron ore and similar products.

The Mode of Operation

The crushing rolls are individually driven in counter-rotation by electro-motors with coupling and gears, via V-belts. The crushing material is fed into the machine by means of conveyors or similar aggregates while it is spread over the whole width of the roll. An optimum use of the crushing tools and uniform belt charging are thus achieved. Roller diameter, tooth form and circumferential speed are adjusted to the type and the size of the feeding material in relation to the required final grain size.

The Special Characteristics

The crushing rolls consist of the roller bodies, complemented with crushing rings or crushing shells. The rolls are secured either with anchor bolts and end disks or bolted with screws. In order to facilitate maintenance, the crushing roll shafts are arranged in heavy-duty cast steel housings with lubricated, amply dimensioned spherical roller bearings. Materials used are of highly wear-resistant, specially cast alloys in order to achieve longevity of parts.

The Versatility

To influence the final grain size by changing the gap and to compensate wear and tear, one of the two crushing rolls is designed as a loose roll. The adjustment is done mechanically, hydraulically or electro-mechanically.

Overload protection is always integrated.

- The mechanical vertical adjustment

Two swivel arms located in the housing of the machine are linked by means of a transversal bar. The gap width is changed by adjusting the loose roll, aided by a hand-operated hollow thread shaft.

- The mechanical horizontal adjustment

The thread shafts directly affect both the loose roll sliding bearings, located in guiding skids.

- The hydraulic vertical adjustment

If the required power can no longer be achieved manually, hydraulic cylinders take over the loose roll adjustment.

- The mechanical horizontal adjustment

The hydraulic horizontal adjustment consists of two hydraulic differential cylinders and the accompanying hydraulic aggregate. All of the mechanical adjustment functions are fully integrated into the hydraulic system.

Advantages

High and constant capacity

Low susceptibility to breakdowns

Long life

Gentle crushing

Easy replacement of wear and spare parts

Wide range of application

With a minimum of fine grains

McNally Sayaji Engineering Company Limited

Corporate Office | Ecospace Campus 2B 11F/12 Old Plot No AA 11/Blk 3 New Town Rajarhat North 24 Pgs Kolkata 700156

Factories | **Baroda** P +91 265 2793650 F +91 265 2791914 | **Kumardhubi** P +91 6540 273010/11/16 F +91 6540 273024
Asansol P +91 341 6554031 | **Bangalore** P +91 8151292470 F +91 80 41153784

Sales Offices | **Kolkata** P +91 33 30141111 | **Bangalore** P +91 80 41153781 | **Chennai** P +91 44 22431309

Mumbai P +91 22 27722002 | **Secundrabad** P +91 40 27205361 | **Nagpur** P +91 712 2535089 | **Ernakulam** P +91 484 2364914
Vishakapatnam P +91 891 2551534 | **Vijaywada** P +91 9440320529

**Crusher | Screens | Mills | Feeders | Conveyors | Port Cranes | Stacker Reclaimer | Wagon Tippler | Slurry Pump | Thickener
Pressure Vessels | Equipments for Steel, Cement, Power & Non Ferrous Metals**