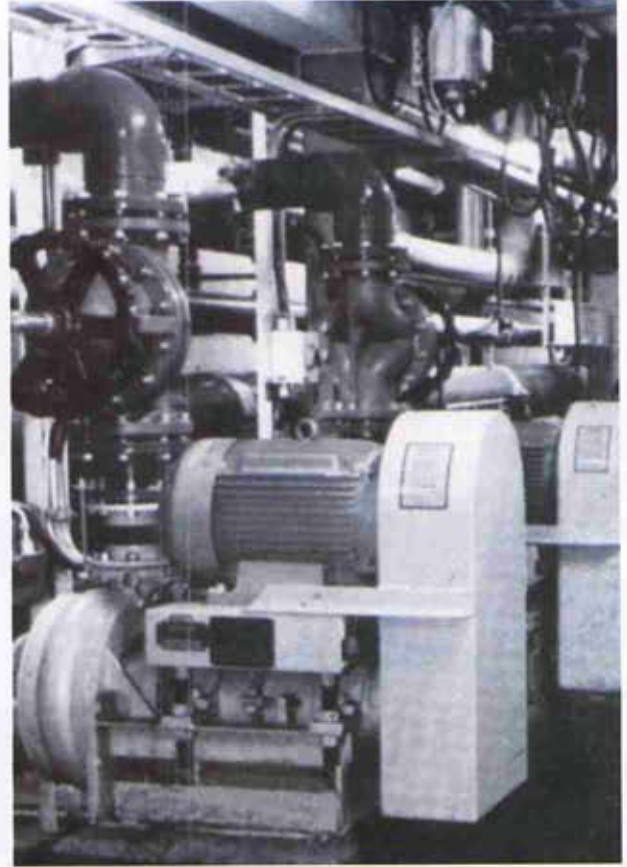
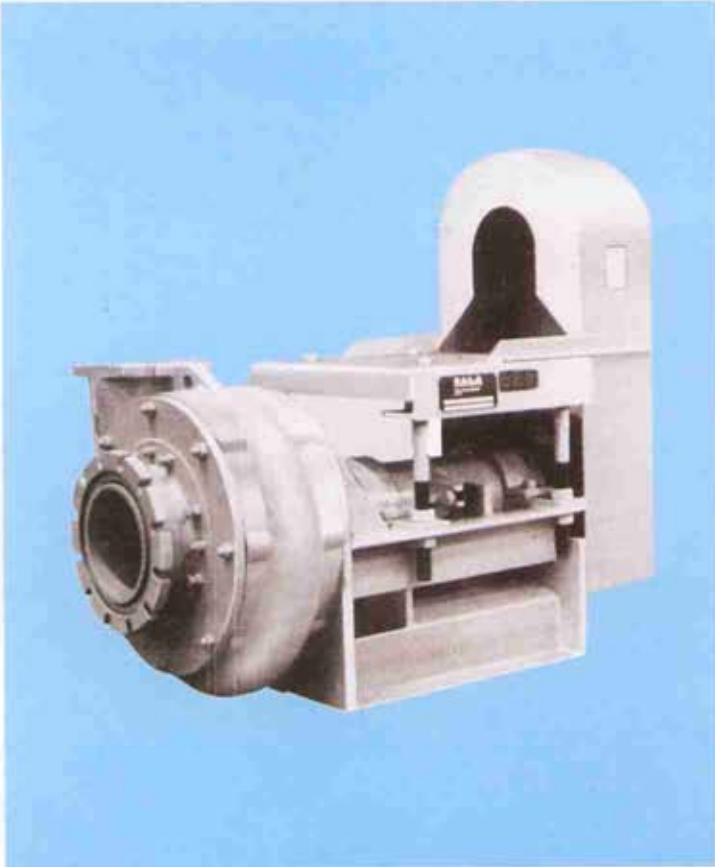


MBE SLURRY PUMP

Horizontal Pumps Type VASA



GENERAL PURPOSE PUMP FOR TOUGH APPLICATIONS

DESIGN

The shaft and bearing assembly unit is easily replaceable and is adjustable to maintain optimum clearance between impeller and inlet. The standard pump is equipped with a packed gland shaft seal but can easily be fitted with a mechanical or dynamic seal. The pump can also be supplied with a "Floating seal", which is virtually maintenance free and requires very small quantities of sealing water.

WEAR PARTS

The VASA pump is equipped with wear parts in soft wear resistant natural rubber or Hi-chrome. A range of different materials is also available such as, Chloroprene - EPDM Butyl - Nitril or Hypalon rubber and also Polyurethane. Stainless steel and High Chrome iron parts with extreme hardness can be supplied for special applications. This selection, together with the various shaft sealing arrangements, makes it possible to adapt the pump for both abrasive and corrosive applications.

Wear parts in different materials are completely interchangeable i.e. any combination of materials is possible.

MBE-SALA can also offer closed - semi-open - and Vertex Flow impellers for all VASA pumps of size 213-80 and above. The three smallest sizes are only available with semi-open impellers. These vertex pumps are used for bone slurry applications.

INSTALLATION

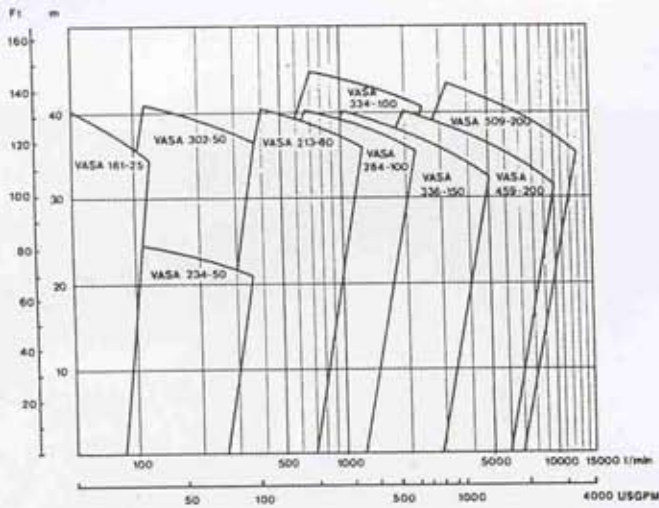
The overhead mounted adjustable motor base plate makes the installation very compact, requires a minimum of floor space and eliminates the need for special foundations.

APPLICATIONS

The pumps are primarily designed for pumping abrasive slurries and thus their main applications are within the mineral processing industry for transport of solid particles in suspension. The different special material qualities for wear parts also make the pumps suitable for duties with a combination of corrosion and abrasion such as hydrometallurgical and some heavy chemical applications. The pumps also find many applications within the paper and pulp industry where they are used for pumping of clay, lime caustic sludge, scrubber water, reject pulp, transport of wood chips, etc. The pumps are also installed in various applications in the sugar industry.

The above picture (RHS) shows an installation with VASA pumps in an effluent treatment plant for scrubber water in a lead/copper smelter where the slurry is very aggressive both from the corrosion and abrasion point of view.

Selection of pump size



Motor size

Motor size and V-rop drive varies with the pump task.
Necessary data for stating pump speed and motor power are:
Flow (l/min. GPM or alike)
Liquid density (kg/m³)
Total discharge head (m, ft or Newton)

Definition of pump

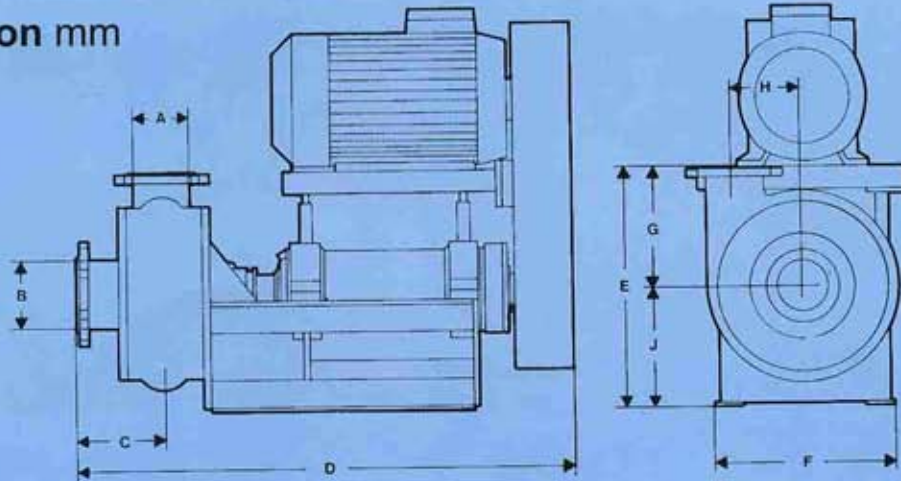
VASA is the type of designation and the figures state the size according to the following :

28 4 - 100

Impeller dia in cm	Height of vanes in cm	Discharge connection in mm
-----------------------	-----------------------------	----------------------------------

Pump curves and the chart below does not include all impeller alternatives

Dimension mm



Dimension given are approximate and subject to alteration without prior notice

Pump size	Dis-charge A	In-let B	C	D	E	F	G	H	J	Max. motor IEC Standard')	Approx. Rubber lined	weight kg Ni-hard
VASA 161-25	25	32	55	600	333	285	173	100	160	7.5kW	60	65
VASA 234-50	50	65	125	780	540	528	230	155	310	11 kW	160	175
VASA 302-50	50	65	125	760	540	528	230	180	310	11 kW	170	215
VASA 213-80	80	100	178	1090	510	430	250	141	260	30kW	250	280
VASA 284-100	100	125	178	1090	530	430	270	173	260	30kW	280	330
VASA 334-100	100	125	178	1090	530	430	270	173	260	30kW	-	330
VASA 336-150	150	165	225	1240	635	490	305	243	330	45kW	400	490
VASA 459-200	200	250	277	1570	830	650	405	309	425	90kW	-	970
VASA 509-200	200	250	277	1570	830	650	405	309	425	90kW	-	1000



**McNally Bharat
Engineering Co Limited**

4 Mangoe Lane, 5th & 7th Floor, Kolkata 700001

Phones: 91-033-55500725-39/22138905-08/22480847/0919

Fax: 91-033-22480340/5016, E-mail: mbecal@mbecl.co.in

Bangalore : Plot No. 21A, Doddanekundi Industrial Area, 2nd Stage, Mahadevapura Post

Bangalore 560 048, Phone- +91-080-28541997/98, 41153781, Fax: +91-080-41153784

E-mail : mbe@mcnallyblr.com, pump@mcnallyblr.com, website : www.mcnallybharat.com