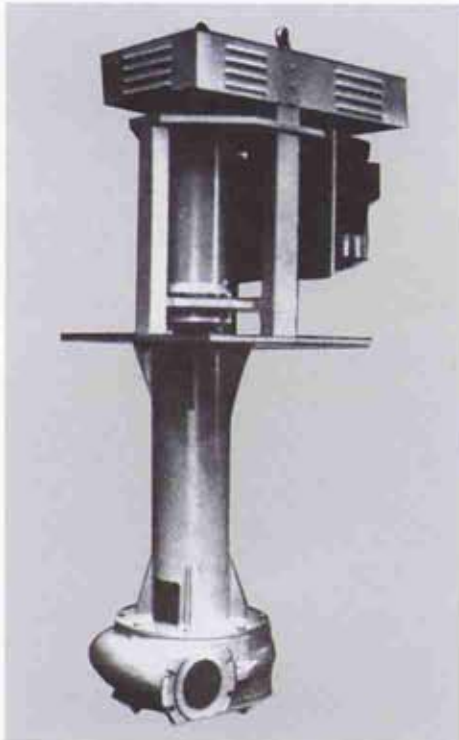


MBE SLURRY PUMP

Sumps Pump Type VASA G



MBE sump pumps are designed for abrasive slurry service and feature simple maintenance and robust construction.

SIMPLE INSTALLATION

The larger units are normally bolted to a permanent baseplate. Free suspension in the sump by the lifting yoke is preferred for the smaller pumps. Both shaft bearings are located in a cylinder which is normally located above the baseplate for accessibility and protection. Special designs giving extended length with the baseplate above the bearings are available on request.

MBE also supplies a series of submersible pumps with pumping elements from the VASA G range.

CANTILEVER DESIGN

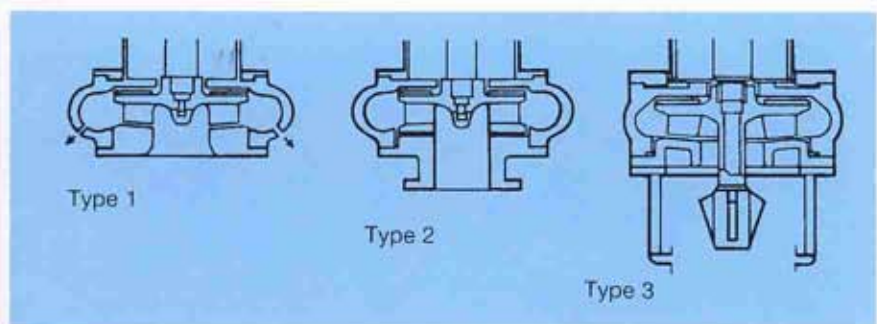
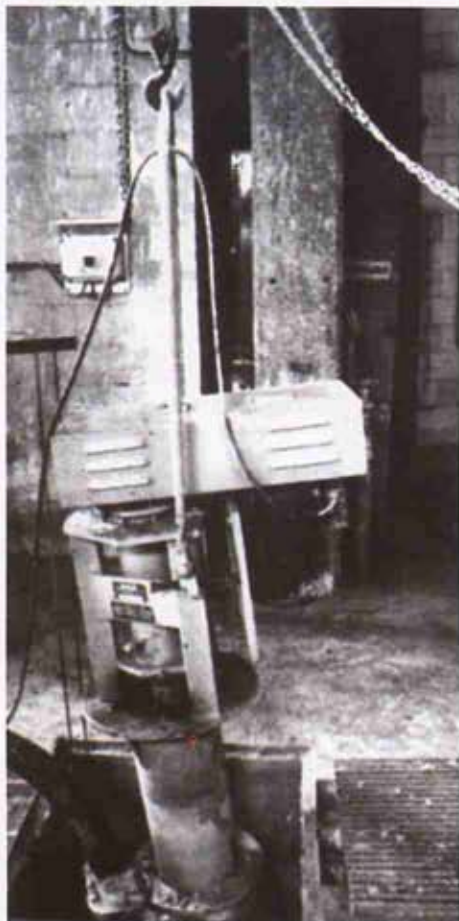
The VASA G pump has no stuffing box, submerged shaft seals or bearings. This guarantees minimum maintenance and eliminates any requirements for sealing or flushing water.

BEARING ASSEMBLY

A rigid shaft is fitted with roller bearings for 60,000 hours minimum life. Impeller clearance is maintained by external axial adjustment of the shaft and bearing housing assembly, the bearings have double protection against penetration of slurry.

WEAR PARTS

Standard pumps are normally supplied with parts in transfer moulded natural rubber, High chromium iron. Other materials such as synthetic rubbers, polyurethanes and stainless steels are also available for most pump sizes. Wear parts in different materials are fully interchangeable. For selection of the optimum pump type and combination of materials, contact MBE



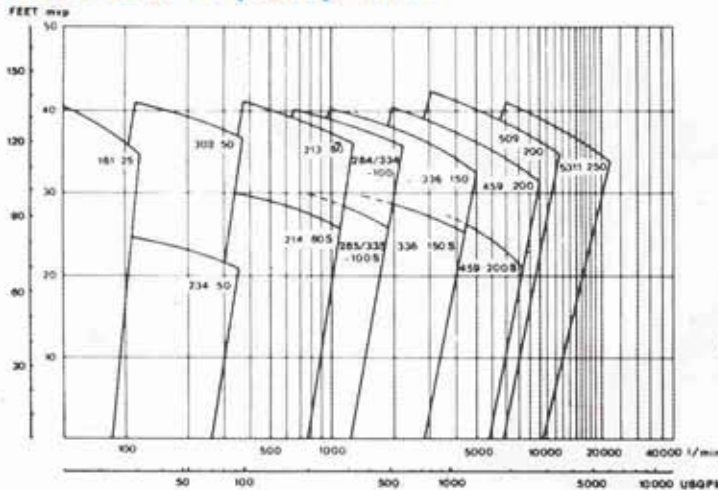
MBE SUMP PUMPS ARE AVAILABLE IN SEVERAL BASIC TYPES.

Type 1 Semi-open impeller and pump casing with spray holes (type "S"). Part of the pumped slurry is returned to the sump. This not only agitates solids in the sump but also de-aerates the pump to prevent air-blocking.

Type 2 Closed impeller and flanged pump inlet which allows fitting of an extended suction pipe to increase the pump working depth.

Type 3 Semi-open impeller with extended shaft and slurry agitator (type "A"). This design is particularly suited for coarse, rapid settling solids.

Selection of pump size



Motor size

Motor size and V-rope drive varies with the pump application. Minimum data required for pump speed and drive motor selection:

- Pump flowrate in LPM or m³/hr
- Liquid and Solids density
- Total discharge head in ft or m

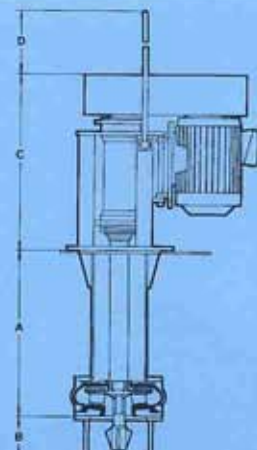
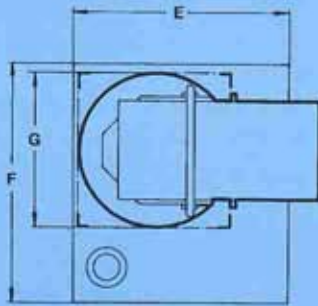
Definition of pump

VASA G is the type designation. The figures state the size according to the table below. Figures followed by S state pump casing with spray holes, and by A agitator.

100 33 6 – 150 S A

Inlet depth below mounting	Impeller dia in cm	Height of vanes in cm	Discharge connection in mm	Spray holes	Agitator
----------------------------	--------------------	-----------------------	----------------------------	-------------	----------

Dimension mm



Dimension given are approximate and subject to alteration without prior notice

Inlet depth*** below Flange A (cm)	Pump size	Discharge mm	B	C	D	E**	F**	G	Weight excl. motor drive and baseplate		Max. motor power	
									Hi-Chrome kg	Rubber kg	IEC	kW
60		25		540	300	600	800	430x430	100	95	132M	7.5
120	161-25*	25	Not available	860	825	600	800	∅0530	380	375	200L	30
180		25		860	825	600	800	∅0530	430	425	200L	30
80		50		540	300	600	800	430x430	175	160	132M	7.5
120	234-50*	50	Not available	860	825	600	800	∅0530	455	440	200L	30
180	302-50*	50		860	825	600	800	∅0530	505	490	200L	30
80		80	190	860	825	750	970	∅0530	375	345	200L	30
120	213-80	80	190	950	820	750	970	∅0564	625	595	225M	45
180	214-80S	80	190	950	820	750	970	∅0564	675	645	225M	45
80		100	190	860	825	750	970	∅0530	420	370	200L	30
120	284/334-100	100	190	950	820	750	970	∅0564	630	580	225M	45
180	285/335-100S	100	190	950	820	750	970	∅0564	680	630	225M	45
100		150	215	950	820	1250	1450	∅0564	660	570	225M	45
180	336-150S	150	215	1260	eye bolts	1200	1500	950x950	1450	1360	3158	110
	459-200											
150	459-200S	200	215	1260	eye bolts	1300	1500	950x950	1650	1480	3158	110
	509-200											
150	5311-250	250	250	1450	eye bolts	1500	1700	850x950	2900	2500	315MB	160

Available only with semi-open impeller and flanged inlet

**Baseplate available as optional extra

***Longer frame length with bearing cylinder below baseplate available by request

mbe McNally Bharat Engineering Co Limited

4 Mangoe Lane, 5th & 7th Floor, Kolkata 700001
 Phones: 91-033-55500725-39/22138905-08/22480847/0919
 Fax: 91-033-22480340/5016, E-mail: mbecal@mbecl.co.in

Bangalore : Plot No. 21A, Doddanekundi Industrial Area, 2nd Stage, Mahadevapura Post
 Bangalore 560 048, Phone- +91-080-28541997/98, 41153781, Fax: +91-080-41153784
 E-mail : mbe@mcnallyblr.com, pump@mcnallyblr.com, website : www.mcnallybharat.com